


EVEN SO THE BODY IS NOT MADE
UP OF ONE PART BUT OF MANY.

Now if the foot should say,
"BECAUSE I AM NOT A HAND,
I DO NOT BELONG TO THE BODY,"
it would not for that reason
stop being

part of the body

I CORINTHIANS 12:27-30



Riverside Presbyterian Church
August 2, 2020 ~ 10:00 am
Eighteenth Sunday in Ordinary Time

Worship by internet: Website – click on the Worship Videos tab on the homepage – www.rpcusa.org YouTube – <http://bit.ly/RPCyoutube>

Audio of the worship service: You may call and listen to the service by dialing 1(312) 626-6799 and use Meeting ID: 973 5627 6934; Password: 960995 . Here is the new link to Coffee Fellowship: <https://bit.ly/RPCFellowship> The numbers do not change for Sunday mornings. Stay on the line after worship and join us for Fellowship.

ORDER OF WORSHIP

Enjoy music from the RPC Carillion as you prepare for worship

WELCOME & ANNOUNCEMENTS

PRELUDE

For Susanna Kyle

Leonard Bernstein

LIGHTING THE CHRIST CANDLE

CALL TO WORSHIP

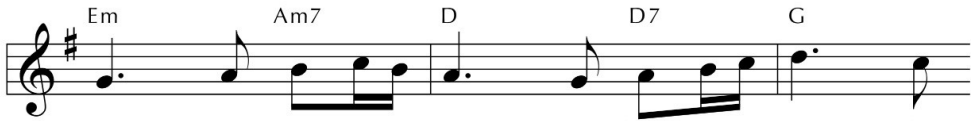
OPENING PRAYER

OPENING HYMN

When Hands Reach Out and Fingers Trace



1 When hands reach out and fin - gers trace the beau - ty
 2 When fin - gers spell and signs ex - press our prayer and
 3 When bro - ken bod - ies will not mend, we thank you,
 4 And when the ways we learn and grow are not the
 5 Your Spir - it gives us dif - fer - ing ways to serve you



of a loved one's face, we thank you, God, that
 praise and thank - ful - ness, we thank you, God, that
 God, for Christ our friend. In him, our heal - ing
 ways that oth - ers know, we thank you, God, that
 well and of - fer praise. When all are joined as



love re - lies on gifts of grace not seen with eyes.
 hands can sing; you bless the si - lent songs we bring.
 can be - gin: he wel - comes all the wound - ed in.
 we have learned your love's a gift, and nev - er earned.
 one, we'll be your a - ble, strong com - mu - ni - ty.

TIME WITH CHILDREN

Lynda Nadkarni

PRAYER FOR UNDERSTANDING

SCRIPTURE

1 Corinthians 12:12-31

MEDITATION

One Body Many Parts

HYMN OF RESPONSE

One Bread, One Body

Refrain



One bread, one bod-y, one Lord of



all, one cup of bless - ing which we bless.



And we, though man-y, through-out the



earth, we are one bod - y in this one Lord.



1 Gen - tile or Jew, ser - vant or
2 Man - y the gifts, man - y the
3 Grain for the fields, scat-tered and



free, wom - an or man, no more.
works, one in the Lord of all.
grown, gath-ered to one, for all.

to Refrain

INVITATION TO OFFER OUR GIFTS

MUSICAL RESPONSE

Praise God, from Whom All Blessings Flow

**Praise God, from whom all blessings flow;
Praise God, all creatures here below;
Praise God above, ye heav'nly host;
Praise Father, Son, and Holy Ghost!**

THE JOYFUL FEAST OF THE PEOPLE OF GOD

Please have bread or crackers and juice or another beverage ready for communion

INVITATION

PRAYER OF THANKSGIVING (RESPONSIVE)

The Lord be with you,

And with your spirit.

Lift up your hearts.

We lift them up to the Lord.

The prayer continues

Our Father, who art in heaven, hallowed be thy name, thy kingdom come, thy will be done, on earth as it is in heaven. Give us this day our daily bread. And forgive us our debts, as we forgive our debtors. And lead us not into temptation but deliver us from evil. For thine is the kingdom, and the power, and the glory, forever. Amen.

COMMUNION OF GOD'S PEOPLE

PRAYER AFTER COMMUNION

BENEDICTION

POSTLUDE

O Stay with Us, Jesus Christ

Helmut Walcha

Prelude: *For Susanna Kyle*; Leonard Bernstein © Hal Leonard

Liturgy adapted from *re:Worship Scripturally-based resources for worship planners and leaders* and *Lectionary Liturgies* by Thom Shuman

When Hands Reach Out and Fingers Trace: Text: Carolyn Winfrey Gillette—© Carolyn Winfrey Gillette; Melody, English Folk Melody, harmony John Weaver—© Hope Publishing Company

One Bread, One Body: Text & Music: John B Foley—© OCP

Praise God from Whom All Blessings Flow: Text: Thomas Ken; Music: Geneva Psalter-public domain

Postlude: *O Stay with Us, Jesus Christ*; Helmut Walcha © Edition Peters

* Copyright & Livestreaming by permission under OneLicense.net #A-725497 and CCLI 20633276 & 20633269
